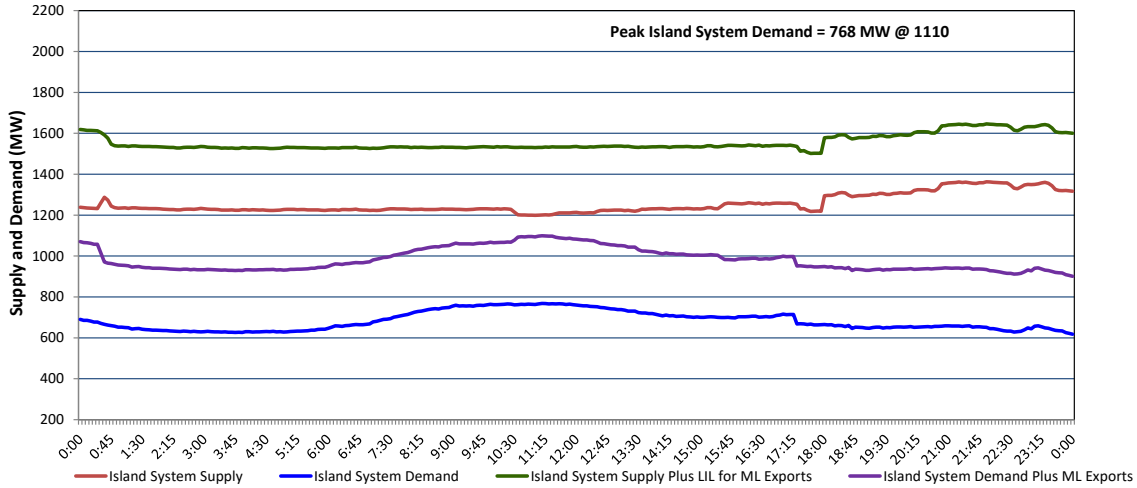


Newfoundland Labrador Hydro (NLH) Supply and Demand Status Report Filed Tuesday, June 23, 2026

Section 1 Island Interconnected System - Supply, Demand & Exports Actual 24 Hour System Performance For Saturday, June 20, 2026



Island Supply Notes For June 20, 2026

- A As of 1326 hours, February 05, 2026, Cat Arm Unit 2 available at 57 MW due to forced derating (67 MW).
- B As of 0800 hours, March 29, 2026, Holyrood Unit 3 unavailable due to planned outage (150 MW).
- C As of 1513 hours, April 16, 2026, St. Anthony Diesel Plant available at 7.7 MW due to forced derating (9.7 MW).
- D As of 0800 hours, May 06, 2026, Holyrood Unit 2 unavailable due to planned outage 40 MW (170 MW).
- E As of 0701 hours, May 24, 2026, Holyrood Unit 1 unavailable due to planned outage 166 MW (170 MW).
- F As of 0841 hours, May 24, 2026, Hinds Lake Unit unavailable due to planned outage (75 MW).
- G As of 0834 hours, June 15, 2026, Bay d'Espoir Unit 3 unavailable due to planned outage (76.5 MW).
- H As of 0834 hours, June 15, 2026, Bay d'Espoir Unit 4 unavailable due to planned outage (76.5 MW).
- I **At 1800 hours, June 20, 2026, Bay d'Espoir Unit 2 available (76.5 MW).**

Section 2 Island Interconnected System - Supply, Demand & Outlook

Sun, Jun 21, 2026	Island System Outlook ²	Seven-Day Forecast	Island System Daily Peak Demand (MW)	
			Forecast ⁸	Adjusted ⁶
Island System Supply: ⁴	1,285 MW	Sunday, June 21, 2026	790	755
NLH Island Generation: ^{3,7}	965 MW	Monday, June 22, 2026	875	840
NLH Island Power Purchases: ⁵	115 MW	Tuesday, June 23, 2026	805	770
NP and CBPP Owned Generation:	205 MW	Wednesday, June 24, 2026	810	775
LIL/ML Net Imports to Island: ⁹	- MW	Thursday, June 25, 2026	830	795
		Friday, June 26, 2026	820	785
7-Day Island Peak Demand Forecast:	875 MW	Saturday, June 27, 2026	755	720

Island Supply Notes For June 21, 2026

- J **At 0436 hours, June 21, 2026, Labrador Island Link unavailable due to planned outage (900 MW).**

- Notes:
1. Generation outages for running and corrective maintenance are included. These are not unusual for power system operations. They generally do not impact customer supply. Hydro schedules outages to system equipment whenever possible to coincide with periods when customer demands are low and sufficient supply reserves are available. However, from time to time equipment outages are necessary and reserves may be impacted.
 2. As of 0800 Hours.
 3. Gross continuous unit output.
 4. Gross output from all Island sources (including Note 3).
 5. NLH Island Power Purchases include: ML Imports, Exploits Generation, Rattle Brook, Star Lake, Wind Generation and capacity assistance (when applicable).
 6. Adjusted for interruptible load and the impact of voltage reduction when applicable.
 7. Due to limitations inherent in the design of combustion turbines, the output of combustion turbines may be reduced in the event that ambient temperatures exceed the threshold required for full rated output. This threshold is dependent on the design of each turbine.
 8. Does not include ML Exports.
 9. LIL Import sunk in the Island System. Actual LIL flows will be restricted by various system conditions including, but not limited to, Island Load, ML Exports and Avalon Unit status.

Section 3 Island Peak Demand and Exports Information Previous Day Actual Peak and Current Day Forecast Peak

Sat, Jun 20, 2026	Island Peak Demand ¹⁰	11:10	768 MW
	Exports at Peak		331 MW
	LIL Net Imports to Island		2,111 MWh
Sun, Jun 21, 2026	Forecast Island Peak Demand		790 MW

- Notes:
10. Island Demand is supplied by NLH generation and purchases, LIL Imports plus generation owned and operated by Newfoundland Power and Corner Brook Pulp & Paper (Deer Lake Power, DLP).